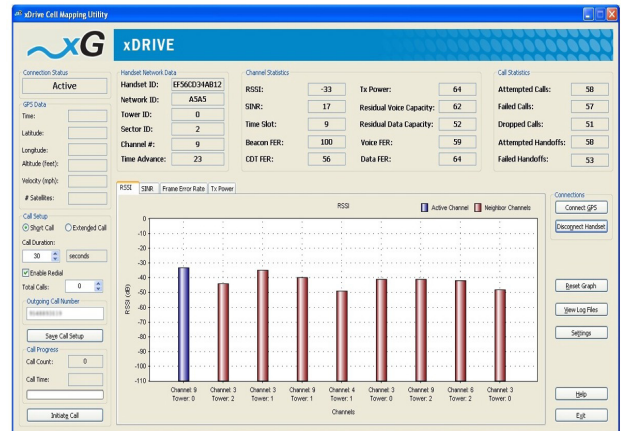


xDrive® Cell Mapping Tool

Wide Area Mobile VoIP and Data

The xDrive® Cell Mapping Tool is an application which allows fast and efficient mapping of xMax® mobile VoIP cell coverage areas.

Designed to run on a standard Windows®-based laptop PC connected to an xMax handset or xMax-enabled mobile device, xDrive is an invaluable field reporting and troubleshooting tool. It provides vital network performance statistics including RSSI, SINR, packet error rate, transmit power, and voice/data capacity. xDrive generates comprehensive call statistics, including data on attempted calls, failed calls, dropped calls, as well as attempted and failed handoffs. In addition, it provides capture of incoming SIP messages, which can be displayed in a window. The tool updates the displayed data at a rate of once per second.



Using a clear graphical layout, xDrive allows field personnel to quickly identify active towers, channels, and sectors available to xMax handsets within their range, as well as handoff information. If the handset is within range of a base station, the Handset ID field will display the handset's ID number. The other statistics fields will show the values of the active channel, and the graphs will display the performance statistics of the active channel.

xDrive logs all gathered channel stats in a comma-delimited text file format. The log files can be easily opened in the editor of the user's choice from the main window. The resulting files can be imported into mapping and/or spreadsheet programs for data analysis. In conjunction with a GPS receiver, xDrive logs the time, latitude, longitude, altitude, velocity and the number of satellites that the GPS is tracking.

The xDrive Cell Mapping Tool is part of xG® Technology's comprehensive, all-IP xMax wireless system infrastructure that represents the first fully mobile VoIP network. The xMax product line includes base stations, switching centers, handsets and modems. xMax networks are powered by xG's patented system design and operate over free, unlicensed spectrum independently from legacy cellular networks. This enables xMax networks to provide advanced mobile voice and broadband data services at far lower costs to operators than alternative technologies – allowing for a faster return on investment and nearer-term cash flows.

Key Features

- *Easy setup and use*
- *Real-time updates*
- *Enables accurate network deployment planning*
- *Auto-dialer functionality allows setup of short-term and extended calls with configurable call duration and redial capability*
- *Delivered as a pre-configured integrated system including software, laptop PC, GPS receiver, all cabling*



Product features and specifications are subject to change without prior notice. xG® and xMax® are registered trademarks of xG Technology, Inc. Copyright 2009, All Rights Reserved. All other trademarks used herein are property of their respective owners.
xDRIVE 11 09



240 South Pineapple Avenue, Suite 701
Sarasota, FL 34236
(941) 953-9035
www.xgtechnology.com